



St. John's Church of England VA Primary School
Finding the light in ourselves and each other
Inspired by the Gospel according to John (chapter 8, verse 12)

An aspirational school that encourages every child regardless of their background to 'soar on wings like eagles' in their learning and personal development (Isaiah 40:31)

Supporting Pupils with Medical Conditions Policy

Approved By:	Quality of Education Committee
Issued:	Spring 2026
To Be Reviewed:	Spring 2027

*A truly inclusive school that is built upon the values of
Hope - Joy - Love - Forgiveness - Faith - Goodness*



St. John's Church of England VA Primary School

Responsible staff member

The named member of school staff responsible for this medical conditions policy and its implementation is: Mr Arnold Worton-Geer, Headteacher.

St John's Church of England VA Primary School (the school) is an inclusive community that supports and welcomes pupils with medical conditions.

- The school is welcoming and supportive of pupils with medical conditions. It provides children with medical conditions with the same opportunities and access to activities (both school based and out-of-school) as other pupils. No child will be denied admission or prevented from taking up a place in the school because arrangements for their medical condition have not been made.
- The school will listen to the views of pupils and parents/carers/carers.
- Pupils and parents/carers/carers feel confident in the care they receive from the school, and the level of that care meets their needs.
- Staff understand the medical conditions of pupils at the school and that they may be serious, adversely affect a child's quality of life and impact on their ability and confidence
- All staff understand their duty of care to children and young people and know what to do in the event of an emergency.
- The whole school & local health community understand and support this medical conditions policy.
- The school understands that all children with the same medical condition will not have the same needs, our school will focus on the needs of each individual child.
- The school recognises its duties as detailed in Section 100 of the Children and Families Act 2014. (and other relevant legislation, see DfE guidance p27). Some children with medical conditions may be considered to be disabled under the definition set out in the Equality Act 2010. Where this is the case, the school complies with their duties under that Act. Some may also have special educational needs (SEN) and may have an Education, Health and Care (EHC) plan which brings together health and social care needs, as well as their special educational provision. For children with SEN, this policy should be read in conjunction with the Special educational needs and disability (SEND) code of practice.

The school's medical conditions policy is drawn up in consultation with a wide range of local key stakeholders within both the school and health settings.

Stakeholders include pupils, parents/carers, school nurse, school staff, governors, and relevant local health specialist services.

The medical conditions policy is supported by a clear communication plan for staff, parents/carers and other key stakeholders to ensure its full implementation.

- Pupils, parent/carers/carers, relevant local healthcare staff, and other external stakeholders are informed of and reminded about the medical conditions policy through clear communication channels.



St. John's Church of England VA Primary School

All staff understand and are trained in what to do in an emergency for children with medical conditions at this school.

- All school staff, including temporary or supply staff, are aware of the medical conditions at this school and understand their duty of care to pupils in an emergency.
- All staff receive training in what to do in an emergency and this is refreshed at least once a year.
- All children with medical conditions that are complex, long-term or where there is a high risk that emergency intervention will be required at the school have an individual healthcare plan (IHP), which explains what help they need in an emergency. The IHP will accompany a pupil should they need to attend hospital. Parental permission will be sought and recorded in the IHP for sharing the IHP within emergency care settings.
- The school makes sure that all staff providing support to a pupil have received suitable training and ongoing support to ensure that they have confidence to provide the necessary support and that they fulfil the requirements set out in the pupil's IHP. This should be provided by the specialist nurse/school nurse/other suitably qualified healthcare professional and/or parent/carer. The specialist nurse/school nurse/other suitably qualified healthcare professional will confirm their competence, and the school keeps an up-to-date record of all training undertaken and by whom.
- The school has chosen not to hold an emergency salbutamol inhaler for use by pupils.
- The school has chosen not to hold an emergency AAI (Adrenaline Auto-Injector).

All staff understand and are trained in the school's general emergency procedures.

- All staff, including temporary or supply staff should be aware of the content of this policy, know what action to take in an emergency and receive updates at least yearly. School nurses will provide annual training for common conditions e.g. asthma, allergies, epilepsy and diabetes.
- If a pupil needs to attend hospital, a member of staff (preferably known to the pupil) will stay with them until a parent/carer arrives, or accompany a child taken to hospital by ambulance. They will not take pupils to hospital in their own car.

The school has clear guidance on providing care and support and administering medication at school.

- The school understands the importance of medication being taken and care received as detailed in the pupil's IHP.
- Medication will only be administered when it would be detrimental to a child's health or school attendance not to do so.
- The school will make sure that there are sufficient members of staff who have been trained to administer the medication and meet the care needs of an individual child. This may include escort staff for home to school transport if necessary. The school will ensure that there are sufficient numbers of staff trained to cover any absences, staff turnover and other contingencies. The school's governing body has made sure that there is the appropriate level of insurance and liability cover in place.
- The school will not give medication (prescription or non-prescription) to a child under 16 without a parent's written consent except in exceptional circumstances, and every effort will



St. John's Church of England VA Primary School

be made to encourage the pupil to involve their parent/carer, while respecting their confidentiality.

- When administering medication, for example pain relief, the school will check the maximum dosage and when the previous dose was given. Parents/carers will be informed.
- The school will make sure that a trained member of staff is available to accompany a pupil with a medical condition on an off-site visit, including overnight stays.
- Parents/carers/carers at the school understand that they should let the school know immediately if their child's needs change.
- If a pupil misuses their medication, or anyone else's, their parent/carer is informed as soon as possible, and the school's disciplinary procedures are followed.

The school has clear guidance on the storage of medication and equipment at school.

- The school makes sure that all staff understand what constitutes an emergency for an individual child and makes sure that emergency medication/equipment, e.g. asthma inhalers, epi-pens etc are readily available wherever the child is in the school and on off-site activities and are not locked away.
- Pupils may carry their own medication/equipment, or they should know exactly where to access it. Those pupils deemed competent to carry their own medication/equipment with them will be identified and recorded through the pupil's IHP in agreement with parents/carers.
- Pupils can carry controlled drugs if they are deemed competent to do so, otherwise the school will store controlled drugs securely in a non-portable container, with only named staff having access. Staff at the school can administer a controlled drug to a pupil once they have had specialist training.
- The school will make sure that all medication is stored safely, and that pupils with medical conditions know where they are at all times and have access to them immediately. Under no circumstances will medication be stored in first aid boxes.
- The school will only accept medication that is in date, labelled and in its original container including prescribing instructions for administration. The exception to this is insulin, which though must still be in date, will generally be supplied in an insulin injector pen or a pump.
- Parents/carers/carers are asked to collect all medications/equipment at the end of the school term, and to provide new and in-date medication at the start of each term.
- The school disposes of needles and other sharps in line with local policies. Sharps boxes are kept securely at school and will accompany a child on off-site visits. They are collected and disposed of in line with local authority procedures.

The school has clear guidance about record keeping.

- As part of the school's admissions process and annual data collection exercise parents/carers are asked if their child has any medical conditions. These procedures also cover transitional arrangements between schools.
- The school uses an IHP to record the support an individual pupil needs around their medical condition. The IHP is developed with the pupil (where appropriate), parent/carer, a designated named member of school staff, specialist nurse (where appropriate) and relevant healthcare services. Where a child has SEN but does not have an EHC plan, their special educational needs are mentioned in their IHP.
- The school has a centralised register of IHPs, and an identified member of staff has the responsibility for this register.



St. John's Church of England VA Primary School

- IHPs are regularly reviewed, at least every year or whenever the pupil's needs change.
- The pupil (where appropriate), parents/carers, specialist nurse (where appropriate) and relevant healthcare services hold a copy of the IHP. Other school staff are made aware of and have access to the IHP for the pupils in their care.
- The school makes sure that the pupil's confidentiality is protected.
- The school seeks permission from parents/carers before sharing any medical information with any other party.
- The school keeps an accurate record of all medication administered, including the dose, time, date and supervising staff.

The school ensures that the whole school environment is inclusive and favourable to pupils with medical conditions. This includes the physical environment, as well as social, sporting and educational activities.

- The school is committed to providing a physical environment accessible to pupils with medical conditions and pupils are consulted to ensure this accessibility. The school is also committed to an accessible physical environment for out-of-school activities.
- The school makes sure the needs of pupils with medical conditions are adequately considered to ensure their involvement in structured and unstructured activities, extended school activities and residential visits.
- All staff are aware of the potential social problems that pupils with medical conditions may experience and use this knowledge, alongside the school's anti bullying policy, to help prevent and deal with any problems. They use opportunities such as PSHE and science lessons to raise awareness of medical conditions to help promote a positive environment.
- The school understands the importance of all pupils taking part in off site visits and physical activity and that all relevant staff make reasonable and appropriate adjustments to such activities in order they are accessible to all pupils. This includes out-of-school clubs and team sports. Risk assessments will be conducted as part of the planning process to take account of any additional controls required for individual pupil needs.
- The school understands that all relevant staff are aware that pupils should not be forced to take part in activities if they are unwell. They should also be aware of pupils who have been advised to avoid/take special precautions during activity, and the potential triggers for a pupil's medical condition when exercising and how to minimise these.

The school makes sure that pupils have the appropriate medication/equipment/food with them during physical activity and off-site visits.

- The school makes sure that pupils with medical conditions can participate fully in all aspects of the curriculum and enjoy the same opportunities at school as any other child, and that appropriate adjustments and extra support are provided.
- All school staff understand that frequent absences, or symptoms, such as limited concentration and frequent tiredness, may be due to a pupil's medical condition.
- The school will not penalise pupils for their attendance if their absences relate to their medical condition.
- The school will refer pupils with medical conditions who are finding it difficult to keep up educationally to the SENCO/INCO who will liaise with the pupil (where appropriate), parent/carer and the pupil's healthcare professional.
- Pupils at the school learn what to do in an emergency.



St. John's Church of England VA Primary School

- The school makes sure that a risk assessment is carried out before any out-of-school visit, including work experience and educational placements. The needs of pupils with medical conditions are considered during this process and plans are put in place for any additional medication, equipment or support that may be required.

The school is aware of the common triggers that can make common medical conditions worse or can bring on an emergency. The school is actively working towards reducing or eliminating these health and safety risks and has a written schedule of reducing specific triggers to support this.

- The school is committed to identifying and reducing triggers both at school and on out-of-school visits.
- School staff have been given training and written information on medical conditions which includes avoiding/reducing exposure to common triggers.
- The IHP details an individual pupil's triggers and details how to make sure the pupil remains safe throughout the whole school day and on out-of-school activities. Risk assessments are carried out on all out-of-school activities, taking into account the needs of pupils with medical needs.
- The school reviews all medical emergencies and incidents to see how they could have been avoided, and changes school policy according to these reviews.

Each member of the school and health community knows their roles and responsibilities in maintaining and implementing an effective medical conditions policy.

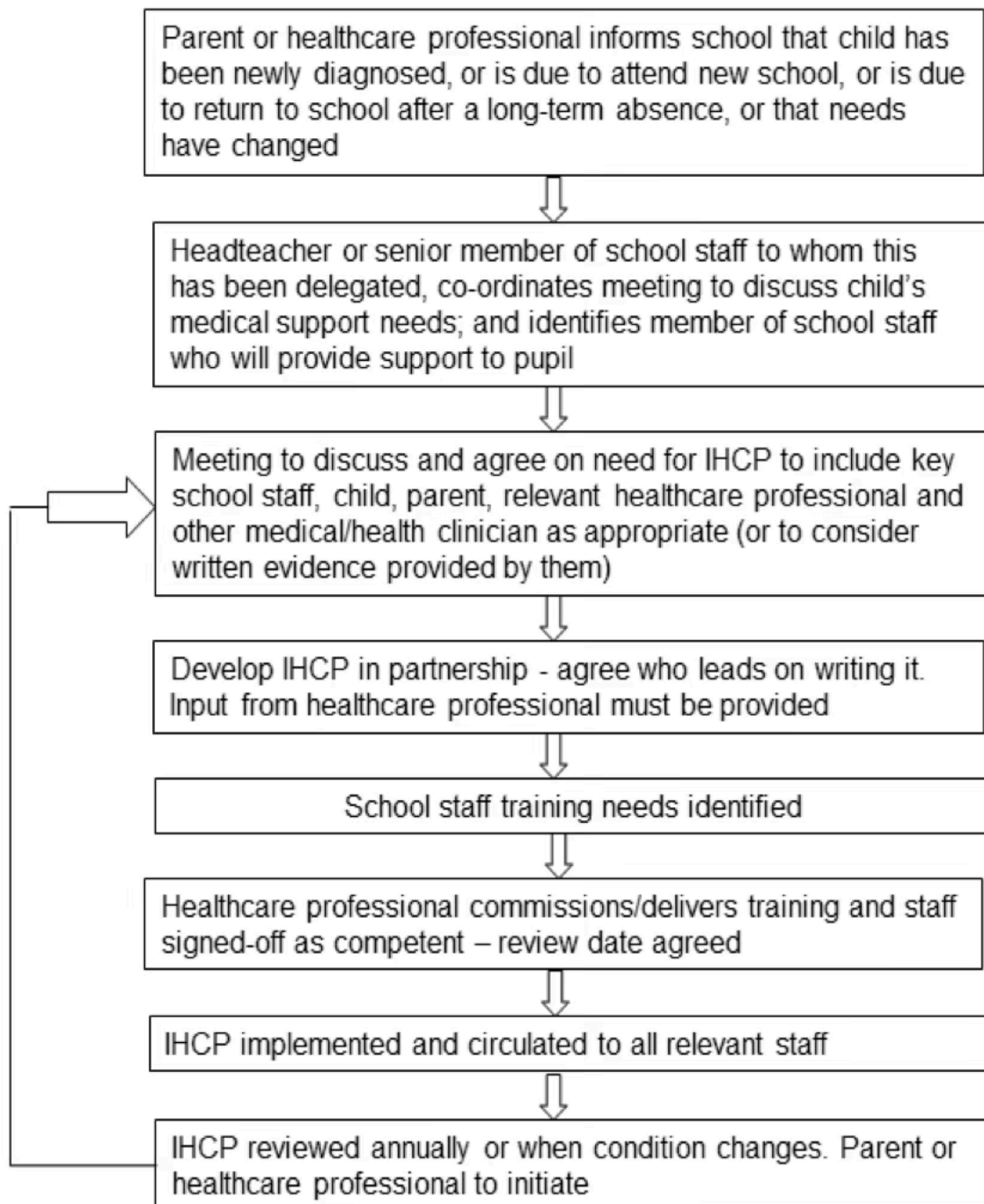
- The school works in partnership with all relevant parties including the pupil (where appropriate), parent/carer, school's governing body, all school staff, employers and healthcare professionals to ensure that the policy is planned, implemented and maintained successfully.
- Key roles and responsibilities are outlined in Appendix 1.

The medical conditions policy is regularly reviewed, evaluated and updated. Updates are produced every year.

- In evaluating the policy, the school seeks feedback from key stakeholders including pupils, parents/carers, school nurses, specialist nurses and other relevant healthcare professionals, school staff, local emergency care services and governors. The views of pupils with medical conditions are central to the evaluation process.
- Should parents and pupils be dissatisfied with the support provided they should discuss these concerns to the Headteacher.



Appendix 1: Model process for developing individual healthcare plans





Supporting Pupils with Medical Conditions

Document Control

2 nd March 2026	Approved	Quality of Education Committee. Annual review. Minor changes after review.
19th February 2025	Approved	Quality of Education Committee
19th February 2025	Created	Arnold Worton-Geer